



SCHOOL DISTRICT OF MILTON
Milton, Wisconsin

BOARD OF EDUCATION
CURRICULUM COMMITTEE MEETING
Monday, June 13, 2016
District Office Professional Development Center – 5:30 PM

- I. Update on ELL (English Language Learners) Program
- II. Overview of 2015-16 Curriculum and Assessments

The potential exists for a quorum of Board members to be in attendance at this meeting. There will be no action taken by the Board at this meeting.

This meeting notice may be supplemented in order to comply with Wisconsin's open meetings law. If this notice is supplemented, the final notice will be posted and provided to the media no later than 24 hours prior to this meeting or no later than 2 hours prior to the meeting, in the event of an emergency



SCHOOL DISTRICT OF MILTON
Milton, Wisconsin

BOARD OF EDUCATION MEETING AGENDA

Monday, June 13, 2016

District Office Professional Development Center – 6:30 PM

- I. Approval of Agenda
- II. Approval of Minutes
- III. Approval of Vouchers
- IV. Public Comment
- V. Building/Department Updates
- VI. Update on FACT Meetings – Shelly Crull-Hanke
- VII. Annual Health Services Report – Teresa Baker
- VIII. Curriculum Committee Report – Bob Cullen
 - A. Update on ELL (English Language Learners) Program
 - B. Overview of 2015-16 Curriculum and Assessments
- IX. Human Resources Committee Report – Betsy Lubke
 - A. Update on Long-Term Care Plan
 - B. Update on MercyCare Health Insurance Plan (POS vs PPO)
 - C. Discussion on Support Staff Time Off (PTO)
 - D. Discussion on Job Sharing Options
 - E. Discussion on Policy Revisions
 - NEOLA Section 3000: Professional Staff
 - NEOLA Section 4000: Support Staff
- X. Transportation Committee Report – Tom Westrick
 - A. Discussion and Possible Approval of Rate Adjustments and One Year Extension to the GO Riteway Transportation Contract
- XI. Discussion and Possible Approval of City of Milton Revised Water Utility Easement at Schilberg Park
- XII. Miscellaneous
 - A. Staffing
 - B. Gifts and Donations
 - C. Meeting Dates
 - D. Motion to go Into Executive Session §19.85 (1) (c)

Considering employment, promotion, compensation or performance evaluation data of any public employee over which the governmental body has jurisdiction or exercises responsibility.
[Adjustment to Contract for Teaching Staff Member (1)]
- XIII. Motion to Reconvene in Open Session
 - A. Possible Approval of Adjustment to Contract for Teaching Staff Member (1)

This meeting notice may be supplemented in order to comply with Wisconsin's open meetings law. If this notice is supplemented, the final notice will be posted and provided to the media no later than 24 hours prior to this meeting or no later than 2 hours prior to the meeting, in the event of an emergency.

SCHOOL DISTRICT OF MILTON
Milton, Wisconsin

BOARD OF EDUCATION MEETING MINUTES

Monday, May 23, 2016

District Office

Board President, Jon Cruzan, called the meeting to order at 6:36 p.m. Board members present: Bob Cullen, Betsy Lubke, Tom Westrick, Shelly Crull-Hanke, Karen Hall and Don Vruwink. Absent: None. Student representatives present: Anna Harvatine and Marci Mitchell-Hallett.

I. Approval of Agenda

A motion was made by Bob Cullen and seconded by Shelly Crull-Hanke to approve the agenda as presented. Motion carried.

II. Approval of Minutes

A motion was made by Betsy Lubke and seconded by Don Vruwink to approve the minutes for the regular meeting held on May 9, 2016 (change Item IV. 'seconded by Karen Hall') and the special meeting held on May 18, 2016 as presented. Motion carried.

III. Approval of Vouchers

A motion was made by Tom Westrick and seconded by Betsy Lubke to approve Bank of Milton vouchers totaling \$290,152.55 representing Funds 10, 20, 50, 80, and 90. Motion carried.

IV. Public Comment

None.

V. Student Council Report

VI. Legislative Issues

VII. Update on FACT Meetings – Shelly Crull-Hanke

VIII. Finance Committee Report – Bob Cullen

A. Discussion on Milton Pre-Kindergarten (MPK) Staffing and Community Site Stipend

B. Discussion and Possible Approval of Bid for the Construction Phase General Contracting Services for the Parking and Traffic Flow Project at Milton East Elementary School From Raymond P. Cattell, Inc. in an Amount Not to Exceed \$568,000 and to Approve the Construction Phase Engineering Services Contract With Strand Associates in an Amount Not to Exceed \$33,000

A motion was made by Bob Cullen and seconded by Tom Westrick to approve the bid for the construction phase general contracting services for the parking and traffic flow project at Milton East Elementary School from Raymond P. Cattell, Inc. in an amount not to exceed \$568,000 and to approve the construction phase engineering services contract with Strand Associates in an amount not to exceed \$33,000. Motion carried.

BOARD OF EDUCATION MEETING MINUTES

Monday, May 23, 2016

Page 2

- C. Discussion and Possible Approval of a Contract With Strand Associates for Engineering and Design Work on the Parking Lot Expansion and Traffic Flow Project at Schilberg Park in an Amount Not to Exceed \$36,000

A motion was made by Bob Cullen and seconded by Don Vruwink to approve the contract with Strand Associates for engineering and design work on the parking lot expansion and traffic flow project at Schilberg Park in an amount not to exceed \$36,000. Motion carried.

- D. Update on the City of Milton Revised Water Utility Easement at Schilberg Park
- E. Discussion on 'Wally's Music Fest' Event at Schilberg Park
- F. Update on District Signage
- G. Update on WEA Class Action Lawsuit Settlement Regarding the Early Retiree Reinsurance Program (ERRP)
- H. Update on Moody's Bond Rating

- IX. Discussion and Possible Approval of 2016-17 Open Enrollment Applications

A motion was made by Tom Westrick and seconded by Karen Hall to approve the 2016-17 open enrollment applications as presented. Motion carried.

- X. Discussion and Possible Approval of 2016-17 CESA #2 Contract

A motion was made by Tom Westrick and seconded by Betsy Lubke to approve the 2016-17 CESA #2 contract as presented. Motion carried.

- XI. Miscellaneous

- A. Staffing

A motion was made by Betsy Lubke and seconded by Bob Cullen to approve the staffing reports as presented; including contracts/letter of employment for Tara Gillette, Jolene Troia, Elizabeth Baker and Nancy Reese; and the resignations of Karla Storlid, Angela Lewicki, Ronald Pett and Joseph Carmody. Motion carried.

- B. Gifts & Donations

A motion was made by Don Vruwink and seconded by Tom Westrick to accept the following gifts and donations with gratitude:

Consolidated School P.I.E.	\$136.00	Bus for 3 rd Grade Swim
Consolidated School P.I.E.	\$899.16	Field Trips
MMS Parents' Group	<u>\$500.00</u>	7 th Grade Field Trip Bus
	TOTAL	\$1,525.16

Motion carried.

C. Meeting Dates

May 25, 2016	FACT Meeting	6:00 p.m.	Milton High School
June 3, 2016	Human Resources Committee Meeting	1:00 p.m.	District Office
June 8, 2016	FACT Meeting	6:00 p.m.	Milton High School
June 13, 2016	School Board Meeting	6:30 p.m.	District Office-PDC
June 22, 2016	FACT Meeting	6:00 p.m.	Milton High School

A motion was made by Betsy Lubke and seconded by Karen Hall to adjourn the meeting at 7:20 p.m.
Motion carried. Meeting adjourned.

Minutes approved June 13, 2016

Jon Cruzan
Board President



School District of Milton

*Opportunity · Achievement
Community*

Timothy J. Schigur
District Administrator

Mary Ellen Van Valin
Director of Business Services

Susan L. Probst
Director of Student Services

Heather N. Slosarek
Director of Curriculum & Instruction

TO: Board of Education
Tim Schigur, District Administrator
FROM: Mary Ellen Van Valin, Director of Business Services
DATE: Thursday, June 9, 2016
RE: Go Riteway Transportation Group Proposed Contract Amendment

The Transportation Committee met on Tuesday, June 7th to discuss a one-year contract extension with Go Riteway Transportation Group as well as a 2.3% rate increase over 2015-16 for the upcoming school year. Our base five-year contract is from 2013-18. With the annual one-year extensions granted, the contract if approved Monday, June 27th, would end June 30, 2021.

Enclosed with this memorandum, please find a rate comparison sheet, historical rate increase sheet, and the contract Addendum that Go Riteway has prepared following the Transportation Committee Meeting (and accompanying letter). We will increase the student transport days from 172 days to 174 for 5 year old kindergarten-Grade 12 next year.

A recommended motion would be **“to move approval of the proposed rate adjustment and one year contract extension to the Go Riteway Transportation Company Contract (Amendment #3) as presented.”**

Attachment(s)



**MILTON SCHOOL DISTRICT
CONTRACTED TRANSPORTATION COSTS 2015-2016**

6/7/2016

Transportation Committee	No. of Vehicles	Rate	No. of Days	Total Cost	Cost per Day
Regular Routes	18	\$ 226.52	172	\$ 701,305.92	\$ 4,077.36
Double Use	18	\$ 37.91	172	117,369.36	682.38
Regular Route - PM Only	1	\$ 158.56	172	27,272.32	158.56
Parochial Janesville	1	\$ 114.02	172	19,611.44	114.02
Shuttles	18	\$ 37.91	172	117,369.36	682.38
REGULAR ROUTES SUB-TOTAL				\$ 982,928.40	\$ 5,714.70

	No. of Vehicles	Rate	No. of Days	Total Cost	Cost per Day
Large Lift Bus	1	\$ 302.31	172	\$ 51,997.32	\$ 302.31
Small Lift Bus	1	264.46	172	45,487.12	264.46
Special Needs Bus	2	264.46	172	90,974.24	528.92
SPECIAL EDUCATION SUB-TOTAL				\$ 188,458.68	\$ 1,095.69

	No. of Routes	Rate	No. of Days	Total Cost	Cost per Day
Pre-Kindergarten (M-Th)	5	\$ 47.38	145	\$ 34,350.50	\$ 236.90
Shuttles (Pre Kindergarten M-Th)	5	\$ 37.91	145	27,484.75	189.55
MID-DAY SUB-TOTAL				\$ 61,835.25	\$ 426.45

GRAND TOTAL	\$ 1,233,222.33				\$ 7,236.84
10 PAYMENTS PER YEAR					10
MONTHLY PAYMENT	\$ 123,322.23				

Overall Increase

3.36%

**MILTON SCHOOL DISTRICT
PROPOSED TRANSPORTATION COSTS 2016-2017**

2.30%

PROPOSED	No. of Vehicles	Rate	No. of Days	Total Cost	Cost per Day
Regular Routes	18	\$ 231.73	174	\$ 725,778.36	\$ 4,171.14
Double Use	18	\$ 38.78	174	121,458.96	698.04
Regular Route - PM Only	1	\$ 162.21	174	28,224.54	162.21
Parochial Janesville	1	\$ 116.64	174	20,295.36	116.64
Shuttles	18	\$ 38.78	174	121,458.96	698.04
REGULAR ROUTES SUB-TOTAL				\$ 1,017,216.18	\$ 5,846.07

	No. of Vehicles	Rate	No. of Days	Total Cost	Cost per Day
Large Lift Bus	1	\$ 309.26	174	\$ 53,811.24	\$ 309.26
Small Lift Bus	1	270.54	174	47,073.96	270.54
Special Needs Bus	2	270.54	174	94,147.92	541.08
SPECIAL EDUCATION SUB-TOTAL				\$ 195,033.12	\$ 1,120.88

	No. of Routes	Rate	No. of Days	Total Cost	Cost per Day
Pre-Kindergarten (M-Th)	5	\$ 48.47	143	\$ 34,656.05	\$ 242.35
Shuttles (Pre Kindergarten M-Th)	5	\$ 38.78	143	27,727.70	193.90
MID-DAY SUB-TOTAL				\$ 62,383.75	\$ 436.25

GRAND TOTAL	\$ 1,274,633.05				\$ 7,403.20
10 PAYMENTS PER YEAR					10
MONTHLY PAYMENT	\$ 127,463.31				

Milton Rate History
6/6/2016

	Single Route Rate	% Increase	No. Days Per Contract
2016/2017	231.73	2.30%	174
2015/2016 (1)	226.52	3.90%	172
2014/2015	218.02	2.50%	179
2013/2014	212.70	1.00%	179
2012/2013	210.59	1.00%	179
2011/2012	208.50	1.00%	179
2010/2011	206.44	2.50%	179
2009/2010	201.40	2.00%	181
2008/2009	197.45	3.50%	181
2007-2008	190.78	3.00%	181
2006-2007 (2)	185.22	3.90%	181
2005-2006	178.27	3.25%	181
2004-2005	172.66	3.00%	181
2003-2004	167.63	3.75%	181
2002-2003	161.57	3.50%	181

- (1) The increase here includes consideration for the reduction of contract days from 179 to 172
- (2) Part of the increase is related to an increase in the base price of fuel.



School District of Milton
Ms. Mary Ellen Van Valin
448 E. High Street
Milton, WI 53563

June 8, 2016

Dear Mary Ellen,

It was good to meet with you and Tim on June 1, 2016. Thank you for your time. We appreciate the ongoing partnership with your district and for your business.

We are requesting the following:

- A 2.3% increase for the 2016-2017 school year
- Adding one year onto our contract which takes our agreement to 2020-2021

As requested, included in this packet is the amendment that outlines the points listed above.

If there is any other information you may require, please let me know. Again, we are grateful to be part of the Milton School District.

Sincerely,

A handwritten signature in black ink that reads "Rochelle H. Bast". The signature is written in a cursive, flowing style.

Rochelle H. Bast
Executive Vice President



**SCHOOL DISTRICT OF MILTON
TRANSPORATION CONTRACT
2013-18
AMENDMENT 3**

The School District of Milton ("District") and Riteway Bus Service, Inc. dba GO Riteway Transportation Group ("Company") hereby agree to amend the contract as follows:

- The term of the contract shall be extended to include the 2020-21 school year.
- For all years of the agreement the Company shall assist with the collection of ridership data needed by the District for the annual DPI reports.
- The rate increase for the 2016-17 school year shall be 2.3% and the rates will be as follows:

Daily Transportation Rates

Regular Route AM and PM	\$ 231.74
Regular Route AM or PM	162.20
Double Use AM and PM	38.78
Parochial Shuttle to Janesville	116.64
Special Ed Large Lift Bus	309.26
Small Lift Bus	270.54
Small Bus	270.54
Early Childhood Midday Routes	48.48
Shuttles	38.78

Other Rates

Extra Curricular Rate Per Mile	1.55
Extra Curricular Rate Per Hour	18.40
Field Trip Surcharge For Returns after 2:30 PM	40.54
Minimum Field Trip or Extra Curricular Charge	40.54
Base Fuel Price Per Gallon	2.44

GO RITEWAY TRANSPORTATION GROUP

SCHOOL DISTRICT OF MILTON

Date

Date

Document Number

**WATER MAIN CONSTRUCTION AND
MAINTENANCE EASEMENT**

This Easement, made by **School District of Milton**, Grantor, conveys a permanent water main easement, as described below, to the City of Milton, Grantee, for good and valuable consideration:

A permanent water main easement including for such purpose the right to operate necessary equipment thereon, and the right of ingress and egress to maintain said water main. Said easement consists of the Grantor's interest in the following described parcel of land:

The East 35 Feet of the South 966 Feet of the North 1033 Feet of the Northeast Quarter of the Northeast Quarter of Section 33, Township 4 North, Range 13 East, And Also the East 45 feet of the North 67 Feet of the Northeast Quarter of the Northeast Quarter of Section 33, Township 4 North, Range 13 East, all in Milton Township, Rock County, Wisconsin.

Further, Grantor conveys a temporary construction easement as described below to Grantee for good and valuable consideration.

A temporary construction easement for the purpose of installing a water main. This easement is to terminate upon the completion of the construction and installation of the water main. Said easement consists of the Grantor's interest in the following described parcel of land:

The West 15 Feet of the East 50 Feet of the South 966 Feet of the North 1033 Feet of the Northeast Quarter of the Northeast Quarter of Section 33, Township 4 North, Range 13 East, And Also the West 5 Feet of the East 50 Feet of the North 67 Feet of the Northeast Quarter of the Northeast Quarter of Section 33, Township 4 North, Range 13 East, all in Milton Township, Rock County, Wisconsin.

See Attached Easement Exhibit showing the parameters of both the permanent and temporary easements.

Dated this ____ day of _____, 2016.

SCHOOL DISTRICT OF MILTON

By: _____

Subscribed and sworn to before me
this ____ day of _____, 2016.

Notary Public, State of Wisconsin
My commission expires: _____

This document was drafted by
Attorney Mark A. Schroeder
Consigny Law Firm, S.C.
303 East Court Street
Janesville, WI 53545

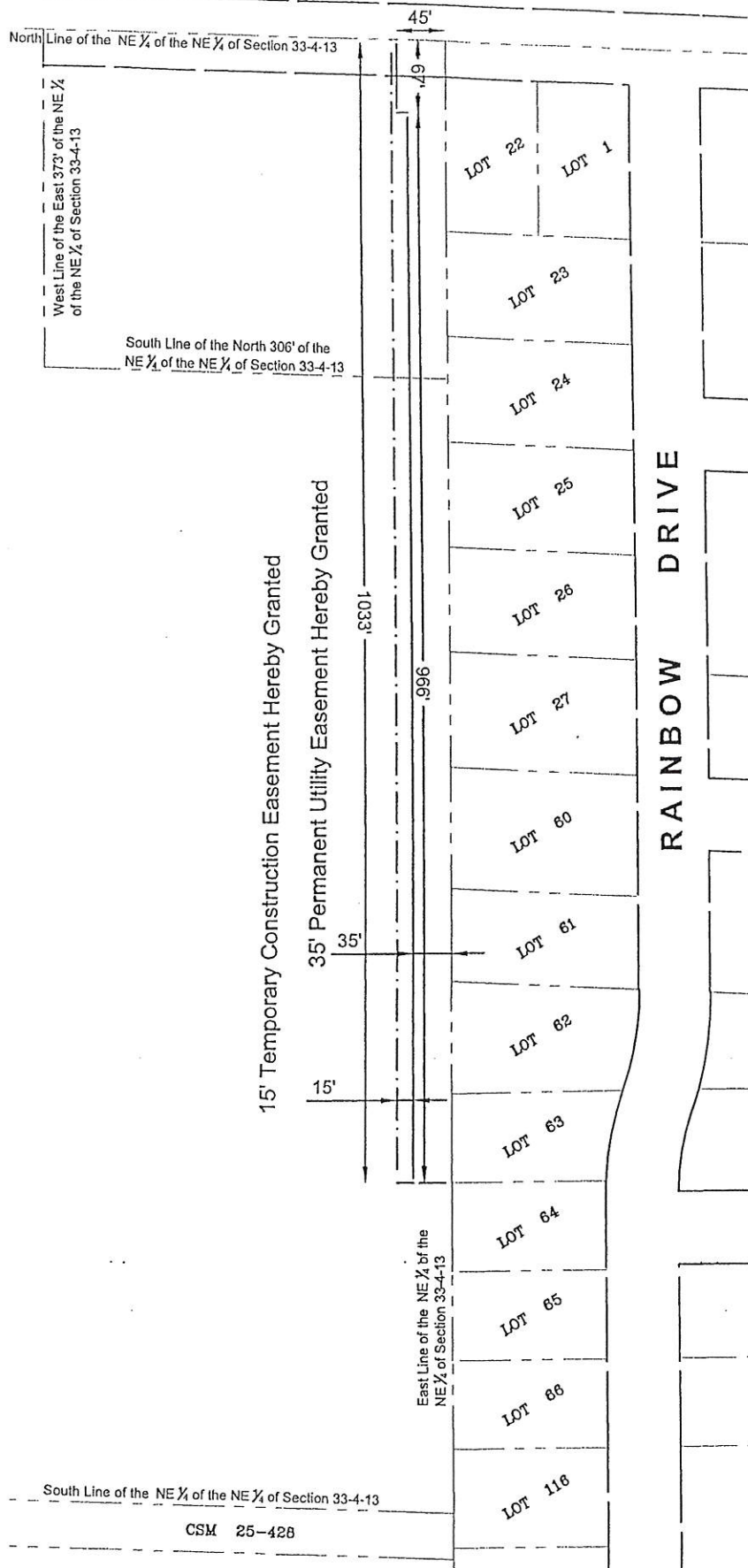
RETURN TO:

Attorney Mark A. Schroeder
Consigny Law Firm, S.C.
303 East Court Street
Janesville, WI 53545

WWUP 00046
(Parcel Identification Numbers)

EASEMENT EXHIBIT

WEST HIGH STREET



STAFFING UPDATES FOR JUNE 13, 2016

1. Contracts/Letters of Employment:

- Wiese, Whitney R. – Learning Disabilities – High School
 - *New position*
- Beilharz, Jessica M. – Pre-K Teacher (.50 FTE) – District-wide
 - *Offered a one-year teaching contract*

2. Resignations:

- Siskovich, Kristin M. – Speech and Language Pathologist – Harmony
 - *Effective: June 7, 2016*
- Martin, Kristi L. – Administrative Assistant (Level 2) – Middle School
 - *Effective: June 17, 2016*
- Breit, Valerie A. – School Counselor – Northside
 - *Effective: June 3, 2016*
- Paul, Brian M. – Schilberg Park Manager – District-wide
 - *Effective: July 1, 2016*
- Stamper, Will J. – Technology Education Teacher – High School
 - *Effective: June 3, 2016*

3. Retirement Notices:

4. Vacancies Posted, Not Yet Filled:

- Wrestling Cheerleading Coach – High School
- Boys Assistant Swim Coach – High School
- Assistant Cross Country Coach – High School
- Financial Literacy/Business Teacher – High School
- Part-time Evening Custodian – High School
- Pre-K Aides – All Pre-K Sites
- Music Drama Director – High School
- Assistant Boys Basketball Coach – High School
- Technology Education – High School
- Instructional Aide – Northside
- School Counselor – Northside
- Long-term Substitute ELL Teacher – High School and Middle School

5. Leave of Absence:

SCHOOL DISTRICT OF MILTON
Milton, Wisconsin

2015-2016 SCHOOL YEAR

GIFTS & DONATIONS FOR BOARD APPROVAL/ACCEPTANCE
Monday, June 13, 2016

<u>From</u>	<u>Amount</u>	<u>For</u>
Friends of Northside	\$280.00	4 th Grade Field Trip
Wisconsin Masonic Foundation	\$1,245.00	New AED Unit for MHS
Fleet Pride	\$100.00	MHS STEM Club - H MV
Redeye Express, LLC	\$100.00	MHS STEM Club - H MV
Linda & Syl Groeschl	\$100.00	MHS Track
Pick & Save – Fort Atkinson	<u>\$105.00</u>	MHS Art Club/NAHS
TOTAL	\$1,930.00	
